

SSC-3000 UPLOAD/DOWNLOAD ASSEMBLY INSTRUCTION MANUAL



IMPORTANT: PLEASE REVIEW THIS ENTIRE PUBLICATION BEFORE INSTALLING AND OPERATING THE UPLOAD/DOWNLOAD ASSEMBLY.

5795 Logistics Parkway • Rockford, Illinois 61109 • Toll-Free 1-800-922-7533 • Phone (815) 874-7891
Fax (815) 874-6144 • Web Site www.rockfordsystems.com • E-Mail customerservice@rockfordsystems.com

Manual No. KSL-270

SSC-3000

Upload/Download Assembly

UPLOAD/DOWNLOAD OF JOB SETUPS

Note: The upload/download of job setups can only be done on SSC-3000 controls with CPU Software Version 1.21 or higher.

The upload/download assembly, part No. RYL-116, consists of a 10' serial cable and a CD with upload/download software.

The upload/download feature gives you the ability to back up all of your job setups to a file on your computer. After the job setup database has been downloaded, you can upload individual job setups back to the SSC-3000 control on the same machine or to other machines.

CONNECTING THE CABLE

Plug the male DB-9 connector of the 10' serial cable in to the P5 network port on the SSC-3000 Main CPU Card. Plug the other end in to a serial port on your computer.

INSTALLING THE SOFTWARE

Insert the Upload/Download Software CD in your computer and double-click the executable Setup file (SETUP.EXE). This will start the installation wizard, which will guide you through the installation.

SETUP

Once the program is installed, launch the program called SSC3000 Upload-Download. The program will open; see Figure 1.1.

Before being able to upload/download, you will need to make sure that the correct serial port is selected. At the top of the SSC3000 Upload-Download program window, click Setup. The Setup window will open; see Figure 1.2.

Select the serial port on your computer that you connected the upload/download cable to, and then click OK.

On the SSC-3000 control, select the **ON** position of the Program On/Off selector switch. Then press **PROG**, which is located in the bottom right corner of any of the main program screens. The MAIN PROGRAM SCREEN will be displayed. See Figure 1.3.

The SSC-3000 control is now ready for upload/download of job setups.

Figure 1.1
SSC-3000 Upload/Download Utility

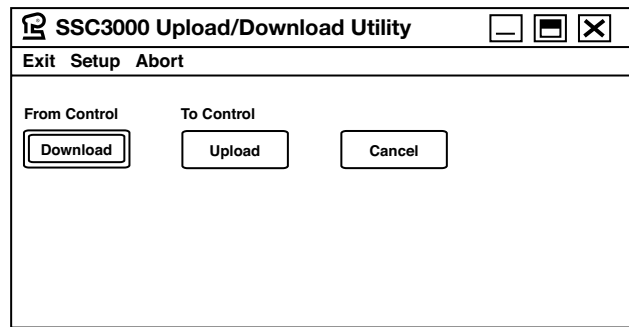


Figure 1.2
Setup

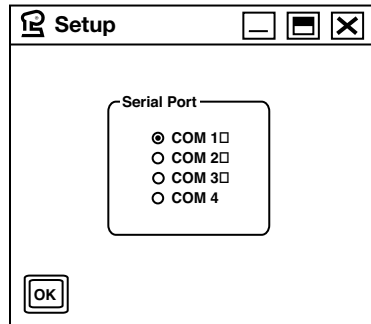
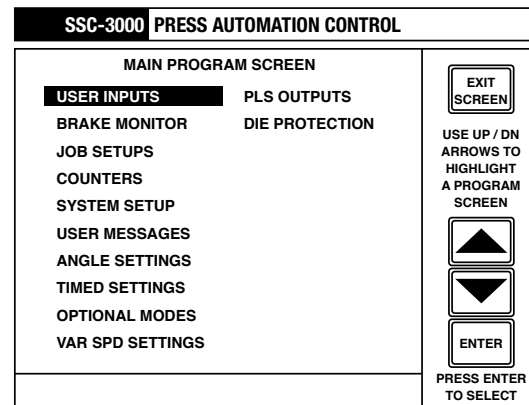


Figure 1.3
Main Program Screen



DOWNLOAD JOB SETUPS FROM SSC-3000 CONTROL

Note: To download job setups, the machine must be stopped.

To download the job setups from the SSC-3000 control to your computer, click Download on the SSC3000 Upload-Download program window. The Select Download Filename window will open. See Figure 1.4.

Choose a location to download the job setups file to. In the File Name field, type in a name for the file (e.g., Machine 1).

When finished, click Open, and the entire job setup database will download from the SSC-3000 control to your computer. The data transfer status will be shown. See Figure 1.5.

When download is complete, a window will open that says Download successful. Click OK to finish.

Figure 1.4
Select Download Filename

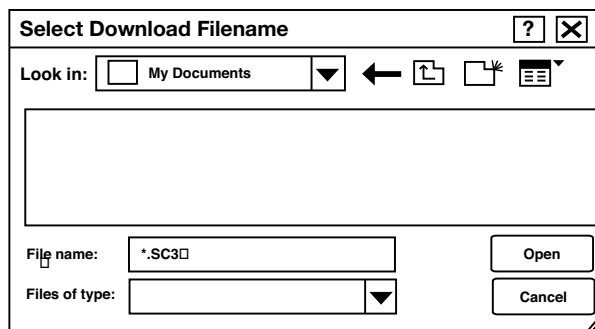
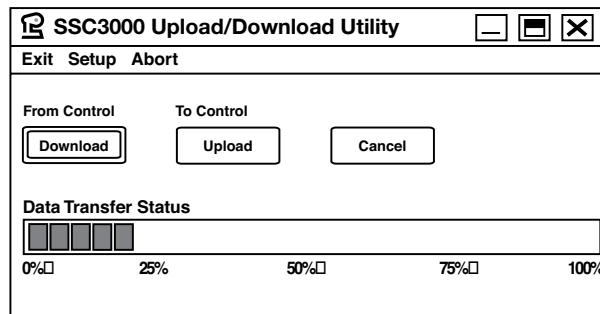


Figure 1.5
Data Transfer Status



SSC-3000

Upload/Download Assembly

UPLOAD JOB SETUPS TO SSC-3000 CONTROL

Note: To upload job setups, the machine must be stopped.

To upload a selected range of job setups from your computer to the SSC-3000 control, click Upload on the SSC3000 Upload-Download program window. The Select Upload Filename window will open. See Figure 1.6.

Find the job setups file that you want to upload jobs from. This file has an extension of .SC3, and it should be in the location that you downloaded the job setups to. When you find the file, click its name so that it appears in the File Name field. Click Open to finish.

The Starting Setup (1-100) window will open next. See Figure 1.7. Enter the first job that you want to upload, and then click OK.

The Ending Setup (1-100) window will then open. See Figure 1.8. Enter the last job that you want to upload, and then click OK.

Note: If you want to upload only one job, enter that job number in both the Starting Setup and Ending Setup windows.

The selected jobs will now upload from your computer to the SSC-3000 control. The data transfer status will be shown. See Figure 1.9.

When upload is complete, a window will open that says Upload Complete. Click OK to finish.

Figure 1.6
Select Upload Filename

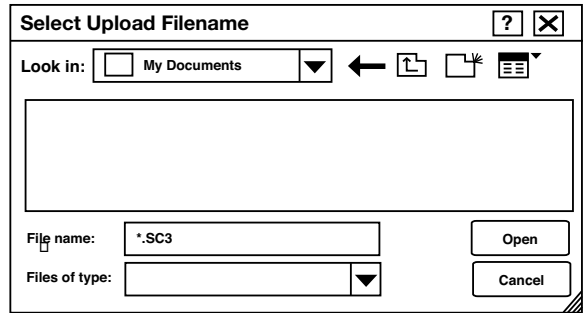


Figure 1.7
Starting Setup

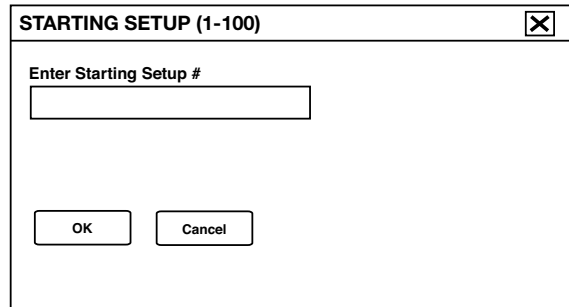


Figure 1.8
Ending Setup

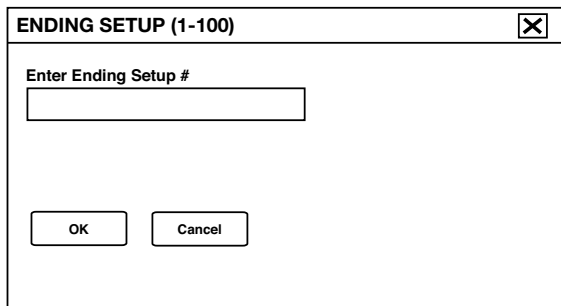


Figure 1.9
Data Transfer Status

