

INSTALLATION MANUAL FOR GRINDER SHIELDS



Grinder Shields

- GWG-250
- GWG-251

Vacuum Pedestal

- GWG-270



Pivot-Mount Grinder Shield

- GWG-100



Standard-Mount Grinder Shields

- GWG-201
- GWG-202
- GWG-203

These shields are designed for machines that require protection from chips (swarf) and coolant generated at the point of operation.

Copyright © 2019 by Rockford Systems, LLC All rights reserved. Not to be reproduced in whole or in part without written permission. Litho in U.S.A.

SECTION 1—IN GENERAL

Grinder Shield Installation Manual

Introduction

This grinder shield is designed for grinder wheels up to eight (8) inches in diameter.

The shield consists of a cast aluminum frame measuring 6" H X 6³/₈" W with a thick replaceable polycarbonate shield. A steel pivot connects the frame to the curved adjustable mounting base.

Photo 1.1



Installation

1. Remove all packing material from the shield and its mounting assembly.
2. Select the shield mounting location on the wheel guard of the grinder.
3. Spot, drill, and tap a hole in the grinder guard. Bolt the shield to the grinder guard.
4. Repeat steps 2 and 3 for the second shield.
5. Adjust each shield to the proper position using the wing nut.

Replacement Parts

Part No. GWW-000 Polycarbonate window

SECTION 2—STANDARD MOUNT

Introduction

These grinder shields are available in various sizes.

The frame is constructed of aluminum or reinforced fiber nylon. Each shield is furnished with a threaded support rod. The transparent shield is polycarbonate which minimizes scratches and provides durability.

Photo 2.1



Installation

1. Remove all packing material from the shield and its mounting assembly.
2. Select the shield mounting location on the wheel guard of the grinder.
3. Spot, drill, and tap a hole in the grinder guard. Fasten the threaded support rod to the grinder guard using the washers provided.
4. Repeat steps 2 and 3 for the second shield.
5. Adjust each shield to the proper position.

REPLACEMENT PARTS

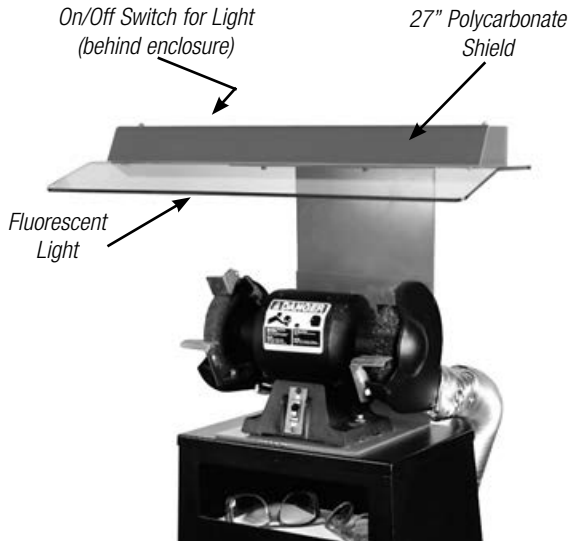
Part No.	Polycarbonate Window For:
GWW-001	GWG-201
GWW-002	GWG-202
GWW-003	GWG-203

(Continued on next page.)

Rockford Systems, LLC
Call: 1-800-922-7533

Due to the wide variety of pedestal and bench grinders on the market today, it is necessary for the user to drill mounting holes in the base of the grinder shield. Do not alter or modify the grinder in any way.

Photo 3.1



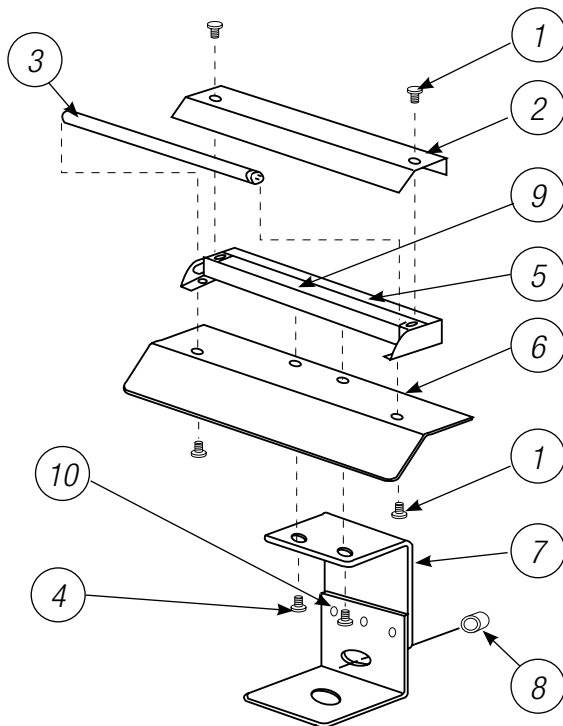
Installation

1. Place your grinder in the desired position on the base of the U-Frame (Item No. 7).
2. Using a marker or punch, transfer the bolt pattern from the grinder to the base of the U-frame. Remove the grinder from the base.
3. Drill four holes in the base. The grinder mounts directly to the U-frame.
4. Place the grommet (Item No. 8) in the hole to be used for the power supply to the grinder; install the grinder and base securely to the bench or pedestal.
5. Remove the lamp cover (Item No. 2) and fluorescent light (Item No. 3). Install two washers and screws (Item No. 4) as shown in the assembly drawing. Reinstall the fluorescent light and lamp cover. Plug the unit into a properly grounded 115-V power supply.
6. Remove all protective paper from the shield (Item No. 6) after installation.

Replacement Parts

Part No. GWG-273 Polycarbonate Shield Only

Figure 3.1
Grinder Shield Diagram



PARTS LIST

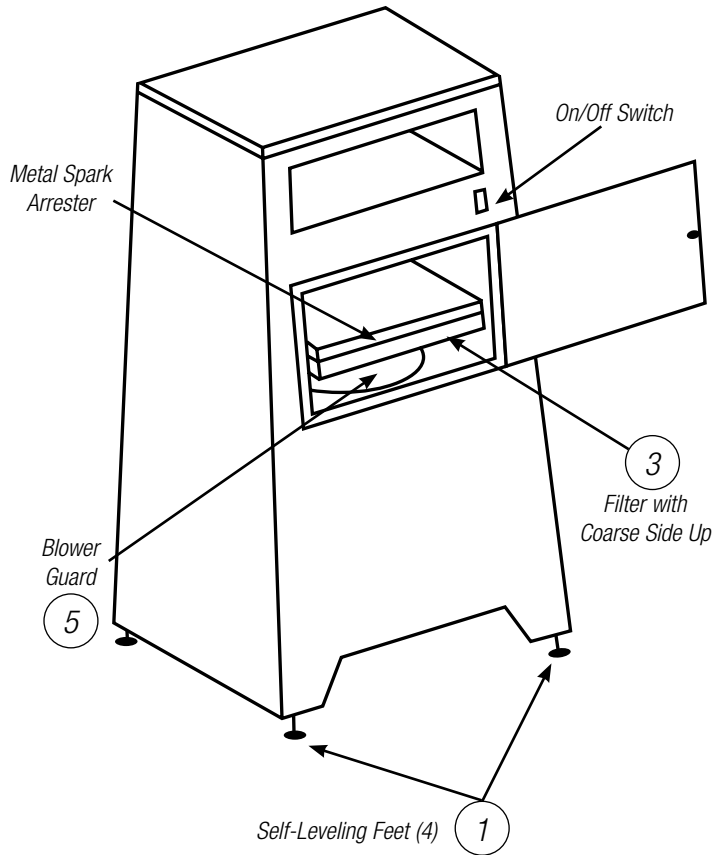
Item No.	Description
1	Pan Head Machine Screw (4)
2	Lamp Cover
3	Fluorescent Light
4	Socket Head Cap Screw (2) w/Star Washer
5	Lamp Enclosure
6	Shield
7	U-Frame (Two-Piece)
8	Grommet
9	Electrical Enclosure
10	Flat Head Machine Screw w/Nut (3)
Items Not Shown in Drawing	
11	Lamp Holer (2)
12	Starter Base
13	Starter
14	Ballast
15	On/Off Switch
16	Power Cord

(Continued on next page.)

SECTION 3—PEDESTAL/BENCH

Grinder Shield Installation Manual

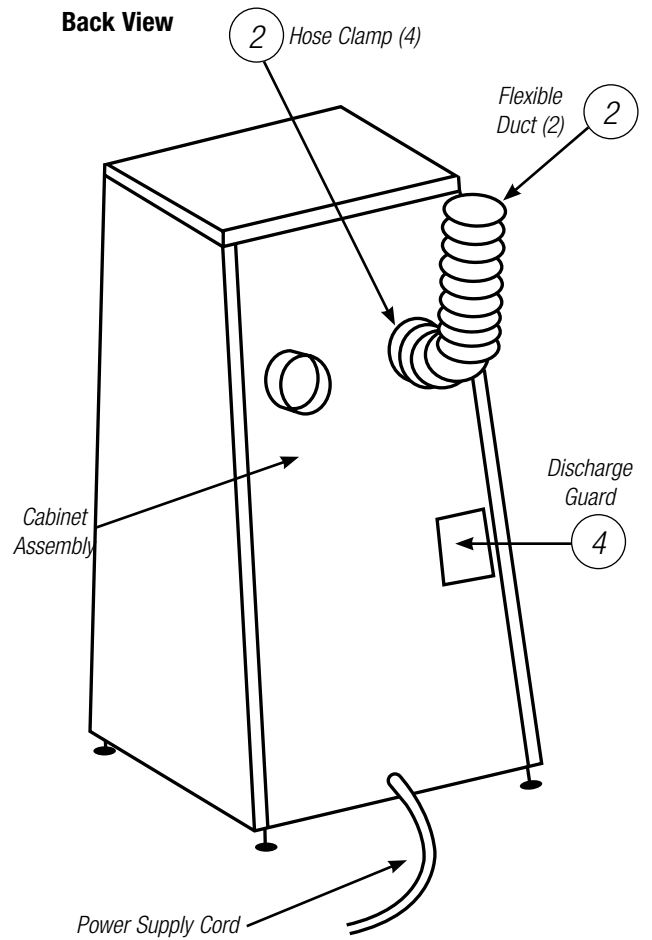
Front View



REPLACEMENT PARTS

Part No.	Description
GWG-271	Replacement Filters (1 Case of 6)
GWG-272	Hose Kit

Back View



(Continued on next page.)

SECTION 4—OTHER CONSIDERATIONS

Grinder Shield Installation Manual

Using the Shield

The shield is intended to deflect objects such as chips (swarf) and coolant. For protection, position the shield between the point of operation and the operator. Make sure the shield will not be hit by normal movements of the grinder, workpieces, etc. Be sure the tool rest is always within $\frac{1}{8}$ " of the grinding wheel and the protective tongue guard is always within $\frac{1}{4}$ " of the grinding wheel.

Note: Always make sure the shield is installed and maintained in first-class condition to meet the applicable OSHA (Occupational Safety and Health Administration) or ANSI (American National Standards Institute) standards.

Maintenance of the Polycarbonate

These shields are made of polycarbonate which was selected for its strength and durability under impact. Although it will scratch if mistreated, it can be kept clear with the following appropriate care.

1. Remove coolant, chips, or debris periodically.
2. Using a clean sponge or soft clean cloth, wash with mild soap or detergent and lukewarm water.
3. Rinse well with clean water.
4. Hairline scratches or minor abrasions can be removed or minimized using a mild car polish such as paste wax. A wax coating also makes cleaning easier.

Do Not rub or wipe with dirty shop towels or scrape with a blade.

Do Not use gasoline, benzine, acetone, or carbon tetrachloride on the shield.

Do Not use cleaners or powders that contain abrasives, or "dry rub" abrasive dust to remove coolant, lubricant, and chips.

When many shields are used in a plant, spare shields can be kept on hand and exchanged periodically. The shields can be removed from the machines, carefully washed, and exchanged at a later date.



When operating any turning machine (grinder), the operator must be properly trained and must wear proper personal protective equipment such as safety glasses with side shields, safety clothing, and safety shoes. The operator must not wear loose clothing, must not have unrestrained long hair, and must not wear jewelry.

Warranty, Disclaimer, and Limitation of Liability

WARRANTY

Rockford Systems, LLC warrants that this product will be free from defects in material and workmanship for a period of 12 months from the date of shipment thereof. ROCKFORD SYSTEMS LLC'S OBLIGATION UNDER THIS WARRANTY IS EXPRESSLY AND EXCLUSIVELY LIMITED to repairing or replacing such products which are returned to it within the warranty period with shipping charges prepaid and which will be disclosed as defective upon examination by Rockford Systems, LLC This warranty will not apply to any product which will have been subject to misuse, negligence, accident, restriction and use not in accordance with Rockford Systems, LLC's instructions or which will have been altered or repaired by persons other than the authorized agent or employees of Rockford Systems, LLC Rockford Systems, LLC's warranties as to any component part is expressly limited to that of the manufacturer of the component part.

DISCLAIMER

The foregoing Warranty is made in lieu of all other warranties, expressed or implied, and of all other liabilities and obligations on the part of Rockford Systems, LLC, including any liability for negligence, strict liability, or otherwise, and any implied warranty of merchantability or fitness for a particular purpose is expressly disclaimed.

LIMITATION OF LIABILITY

Under no circumstances, including any claim of negligence, strict liability, or otherwise, shall Rockford Systems, LLC be liable for any incidental or consequential damages, or any loss or damage resulting from a defect in the product of Rockford Systems, LLC