

# Flexible-Arm Lamps



These flexible-arm lamps can be used to light the point of operation of machines or most any work area where additional light is needed. The heavy-duty, flexible arms are made of spring steel and are covered with vinyl to protect them from grease, oil, and contaminants that would weaken their holding ability. They offer virtually unlimited adjustment possibilities and long-term durability.

All lamps are UL-listed with the C-UL US listing mark, which indicates compliance with both United States and Canadian requirements. The lamps have 6' cords with grounded plugs (120 V). The lamp shade is made of high-impact polycarbonate that is resistant to denting, chipping, and cracking. It has a double wall that keeps the outer wall from getting too hot, allowing adjustment of the lamp while in use. A bright conical reflector directs the light to where it is needed. Each lamp uses a 100-watt-maximum regular incandescent bulb (not included). An innovative, finned aluminum heat sink keeps the toggle switch cool for a long switch life. Optional accessories for the lamp include a wire guard that can be snapped onto the front rim of the shade to protect the bulb, and a magnifier attachment that can mount directly to the shade with a 2" x 4", 2-power glass lens. Please note that the wire guard and the magnifier attachment cannot be used together.

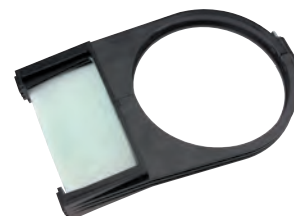
The flexible-arm lamps have three mounting options: direct, C-clamp, or magnetic. The direct-mount base can be fastened directly to any flat surface with two 1/4" fasteners (included). The C-clamp base can be mounted to a table or ledge up to 1 3/4" thick. The magnetic base consists of a 3"-diameter magnet with **100-lb holding force**. If an adequate flat, ferrous mounting surface is not available, an optional steel mounting plate can be permanently attached to any flat surface to hold the magnetic base. (Fasteners not included.)

## Ordering Information

Part No.	Description
RAL-504	Lamp With 18" Flexible Arm and Direct-Mount Base
RAL-505	Lamp With 24" Flexible Arm and Direct-Mount Base
RAL-506	Lamp With 18" Flexible Arm and C-Clamp Base
RAL-507	Lamp With 24" Flexible Arm and C-Clamp Base
RAL-508	Lamp With 18" Flexible Arm and Magnetic Base
RAL-509	Lamp With 24" Flexible Arm and Magnetic Base

## Optional Accessories

Part No.	Description
RAL-510	Wire Guard That Snaps Onto Shade to Protect the Bulb
RAL-511	Magnifier Attachment With 2" x 4", 2-Power Glass Lens
FKT-1106	3 1/2" x 4 5/8" Steel Mounting Plate for Magnetic Base



**RAL-511 — Optional Magnifier Attachment**