

## SAB-A (SWING-AWAY WITH ADJUSTABLE GUARDS) AND SAB-NA (SWING-AWAY WITH NONADJUSTABLE GUARDS) MOUNTING BRACKETS

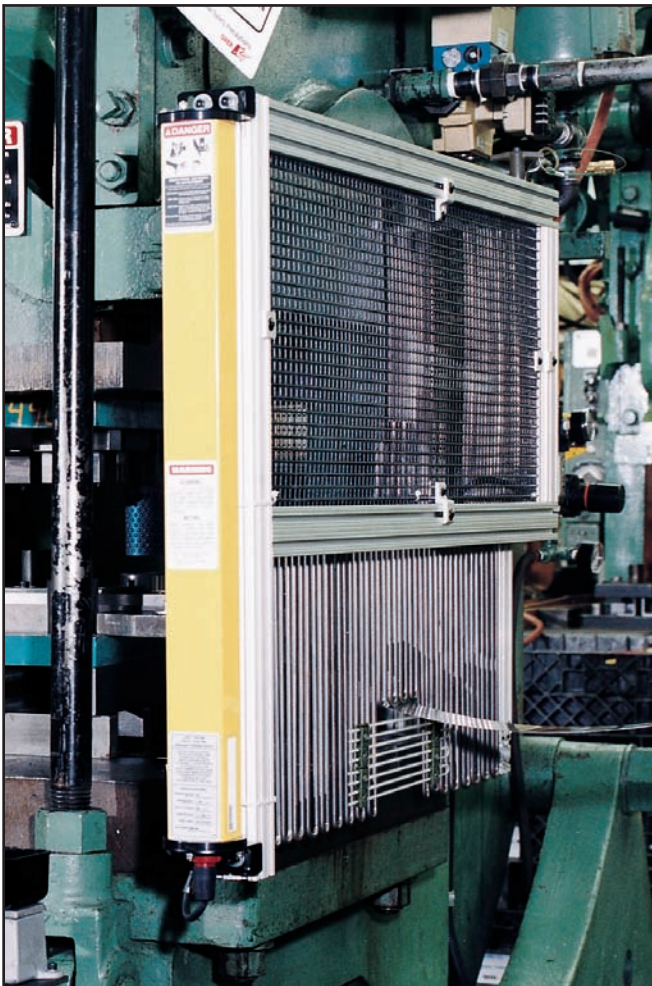
Swing-away light curtain mounting brackets with guards are ideal for many machines, including C-frame presses and press brakes, when the light curtain must be swung out of the way for setup, die changes, or maintenance. The light curtain transmitter and receiver are easily aligned when they are swung back into the machine operating position. The 2" square extruded-aluminum brackets include side barrier guards as shown. The nonadjustable portion of these guards can be constructed of black or yellow mesh ( $\frac{1}{2}$ " square, 16 gauge), or clear polycarbonate ( $\frac{3}{16}$ "). The lower portion of the barrier guard can be constructed of

adjustable, black-oxidized steel hairpins. This allows for feeding of stock, location of chutes, etc., on the sides of the point of operation.

These guards incorporate a hinge assembly on the corner. This allows the light curtain to be swung out. This assembly can also be used to adjust the light curtain panel forward and backward to adjust for safety distance. A built-in locking pin in this assembly holds the panel in place.

Swing-away brackets and barrier guards are built to specifications and measurements provided. See the appropriate **SAB-A** or **SAB-NA** measurement form.

### SAB-A MOUNTING BRACKET



Swing-Away Light Curtain Mounting Bracket With Adjustable Guards for Power Presses

### SAB-NA MOUNTING BRACKET



Swing-Away Light Curtain Mounting Bracket With Nonadjustable Guards for Press Brakes

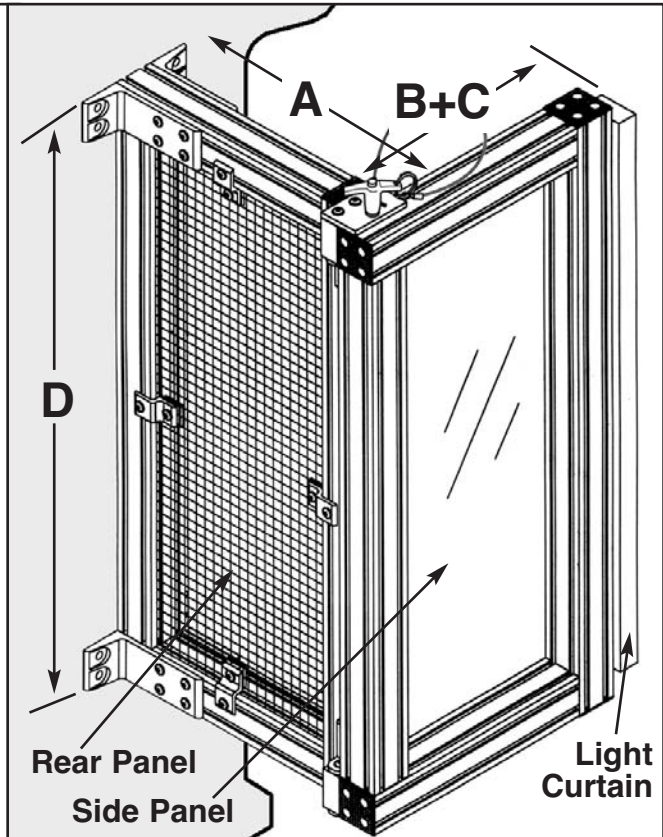
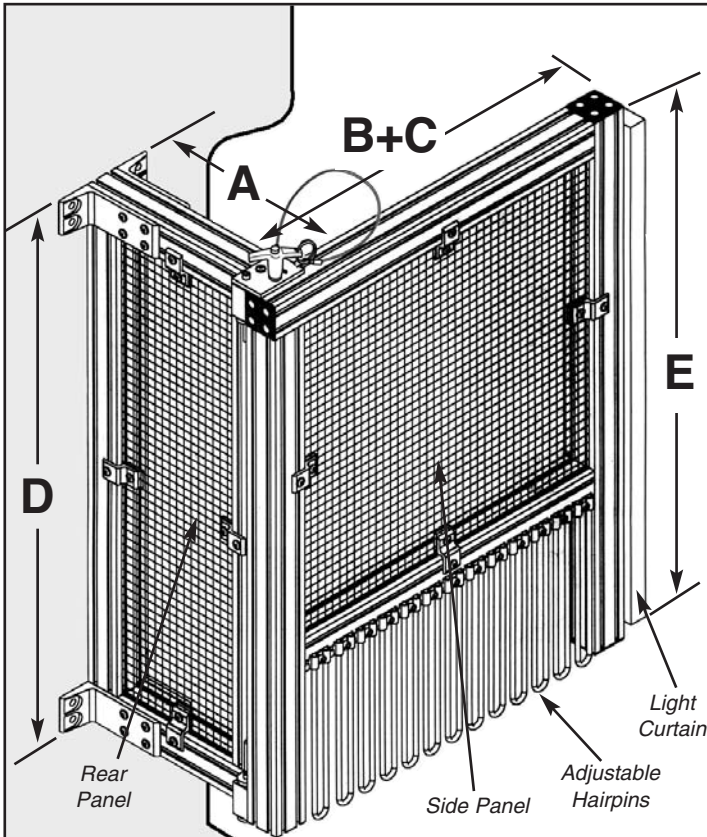
## SWING-AWAY MOUNTING BRACKET SPECIFICATIONS

### SAB-A

(WITH ADJUSTABLE GUARDS)

### SAB-NA

(WITH NONADJUSTABLE GUARDS)



Note:  $B + C$  dimension includes safety distance. Stopping time of the machine must be determined to establish the safety distance. Please consult the factory if assistance is needed.

Select the appropriate SAB (swing-away bracket) for your application. If adjustability is required in the lower portion of the barrier guard section, select the mounting bracket **SAB-A**. If adjustability is not required, select the mounting bracket **SAB-NA**.

Please complete one of the measurement forms (see pages 69 or 70) when ordering these brackets. The A, B, C, D, and E dimensions will be determined from the measurements supplied. Check the material type for the sides and rear panels below.

#### SAB-A

LEFT SIDE OF MACHINE	RIGHT SIDE OF MACHINE
<b>Side Panel Material Type</b>	
<input type="checkbox"/> Black Mesh <input type="checkbox"/> Yellow Mesh <input type="checkbox"/> Clear Polycarbonate	<input type="checkbox"/> Black Mesh <input type="checkbox"/> Yellow Mesh <input type="checkbox"/> Clear Polycarbonate
<b>Rear Panel Material Type</b>	
<input type="checkbox"/> Black Mesh <input type="checkbox"/> Yellow Mesh <input type="checkbox"/> Clear Polycarbonate	<input type="checkbox"/> Black Mesh <input type="checkbox"/> Yellow Mesh <input type="checkbox"/> Clear Polycarbonate

#### SAB-NA

LEFT SIDE OF MACHINE	RIGHT SIDE OF MACHINE
<b>Side Panel Material Type</b>	
<input type="checkbox"/> Black Mesh <input type="checkbox"/> Yellow Mesh <input type="checkbox"/> Clear Polycarbonate	<input type="checkbox"/> Black Mesh <input type="checkbox"/> Yellow Mesh <input type="checkbox"/> Clear Polycarbonate
<b>Rear Panel Material Type</b>	
<input type="checkbox"/> Black Mesh <input type="checkbox"/> Yellow Mesh <input type="checkbox"/> Clear Polycarbonate	<input type="checkbox"/> Black Mesh <input type="checkbox"/> Yellow Mesh <input type="checkbox"/> Clear Polycarbonate

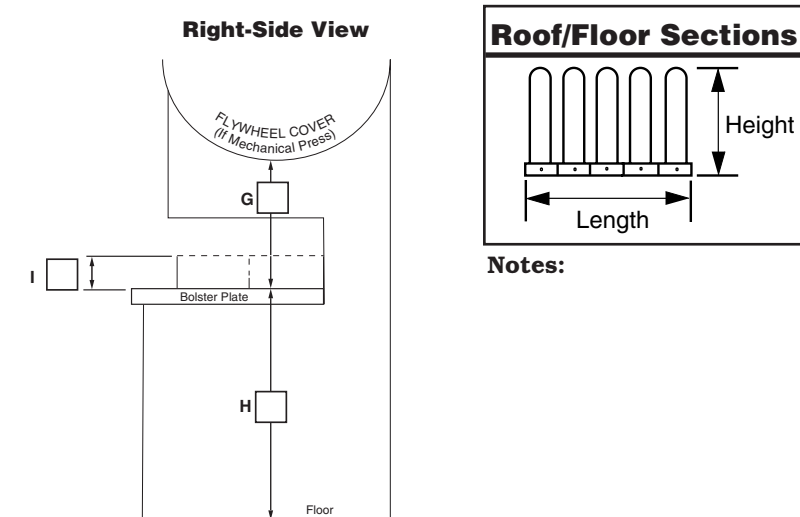
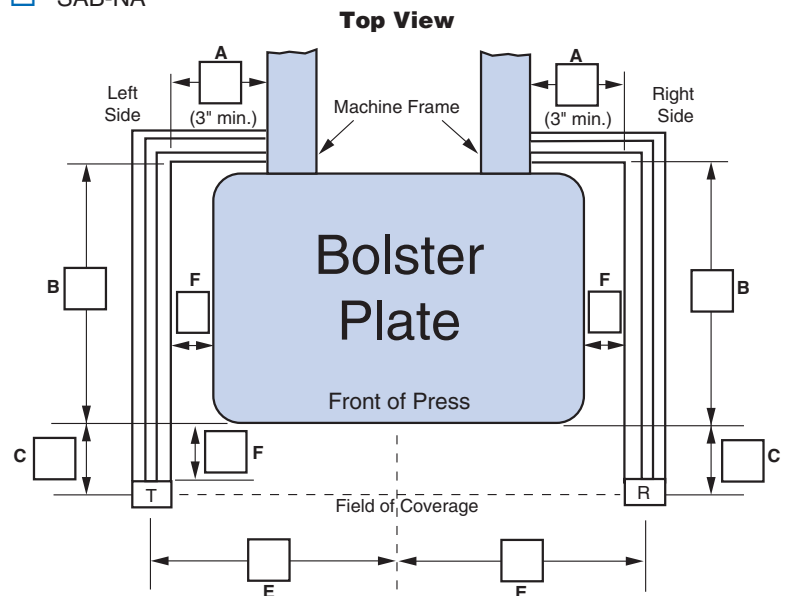
## MEASUREMENT FORM FOR MODELS SAB-A AND SAB-NA SWING-AWAY BRACKETS

Company \_\_\_\_\_ Address \_\_\_\_\_  
 City \_\_\_\_\_ State \_\_\_\_\_ ZIP \_\_\_\_\_  
 Attention \_\_\_\_\_ Rep. \_\_\_\_\_  
 Machine Mfr. and Model No. \_\_\_\_\_ Machine No. \_\_\_\_\_  
 Measured By \_\_\_\_\_

Determine which mounting brackets are required: SAB-A (with adjustable barrier guards) or SAB-NA (with nonadjustable barrier guards). Check the bracket type required and complete measurements for the machine where brackets will be applied.

- SAB-A\*  
 SAB-NA\*

### PRESS APPLICATION



**Notes:**

### MEASURING INSTRUCTIONS

**Check type of press:**

- Mechanical     Hydraulic     Other

Size of light curtain: \_\_\_\_\_"

- A:** Enter dimensions from mounting point on press frame to inside of swing-away mounting bracket. (Be sure bracket extending forward will clear bolster and any obstruction on the side of the press frame.)
- B:** Enter dimension from front side of machine frame mounting bracket to front edge of bolster plate (assuming nearest pinch point to operator is at the front edge of bolster).
- C:** Enter the minimum safety distance determined by the safety distance formula. Stopping time of the press must be determined to establish safety distance.
- D:** Enter the panel height for the guard on the left and right side of machine.  
 Left \_\_\_\_\_"    Right \_\_\_\_\_"

*Note: The light curtain mounting extrusion will be a minimum of 8" longer than the light curtain field of coverage.*

- E:** If roof section(s) are required, enter E dimension(s) (height) and provide length of roof section(s):  
 Left \_\_\_\_\_"    Right \_\_\_\_\_"
- F:** If floor section(s) are required, enter F dimension(s) (height) and provide length of floor section(s):  
 Left \_\_\_\_\_"    Front \_\_\_\_\_"    Right \_\_\_\_\_"
- G:** If hairpins are required on side panel extending upward, enter G dimension (height) above the guard to the flywheel cover and provide length \_\_\_\_\_".
- H:** Height from floor to top of bolster.
- I:** Maximum feedline height (used to determine hairpin length if adjustable brackets).

\* 1/2" square black mesh will be furnished in the nonadjustable portion of the assembly unless otherwise specified in Notes section above.



**Precautions should be taken when applying light curtains for point-of-operation safeguarding. Be sure that someone cannot pass through or stand undetected between the plane of light and the hazard when a light curtain is mounted in a vertical position. If a light curtain must be mounted in this manner due to the safety distance requirements or because of the configuration of the machine, be sure that supplemental safeguarding is provided to safeguard this pass-through area. Examples of supplemental safeguarding include a horizontally mounted light curtain, single-beam devices, guards, or pressure-sensitive safety mats on the floor.**

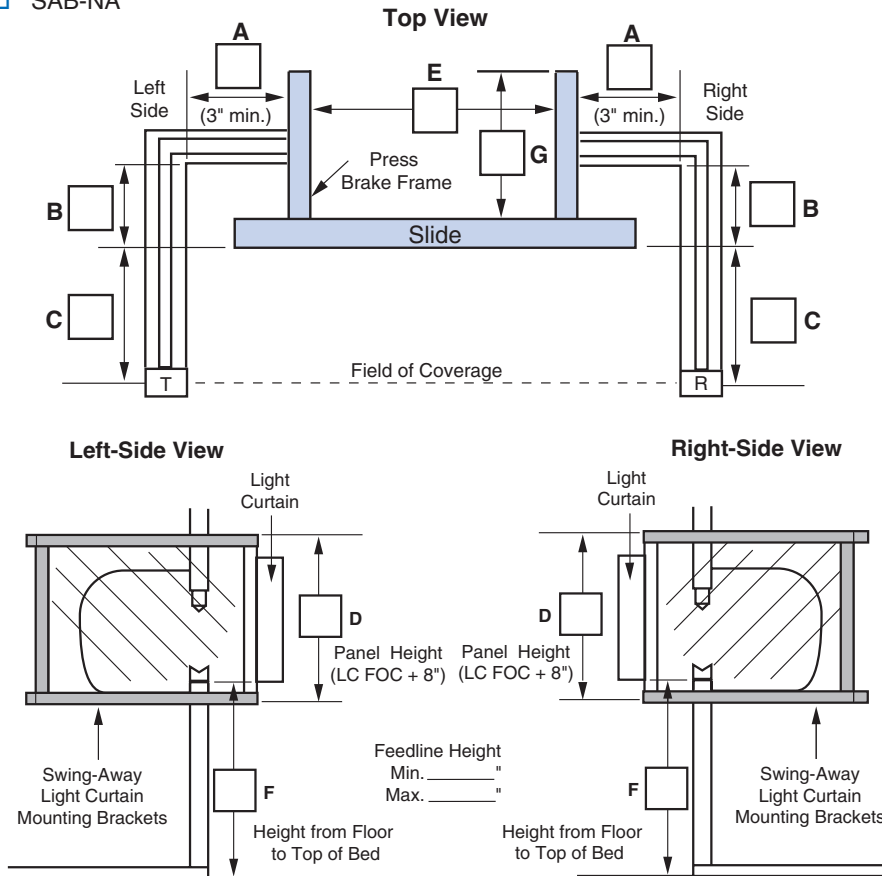
## MEASUREMENT FORM FOR MODELS SAB-A AND SAB-NA SWING-AWAY BRACKETS

Company \_\_\_\_\_ Address \_\_\_\_\_  
 City \_\_\_\_\_ State \_\_\_\_\_ ZIP \_\_\_\_\_  
 Attention \_\_\_\_\_ Rep. \_\_\_\_\_  
 Machine Mfr. and Model No. \_\_\_\_\_ Machine No. \_\_\_\_\_  
 Measured By \_\_\_\_\_

Determine which mounting brackets are required: SAB-A (with adjustable barrier guards) or SAB-NA (with nonadjustable barrier guards). Check the bracket type required and complete measurements for the machine where brackets will be applied.

- SAB-A\*  
 SAB-NA\*

### PRESS BRAKE APPLICATION



### MEASURING INSTRUCTIONS

#### Check type of press brake:

- Mechanical  
 Air Clutch  
 Other

Size of light curtain: \_\_\_\_\_"

**A:** Enter dimensions from mounting point on machine frame to inside of swing-away bracket. (Be sure bracket extending forward will clear slide.)

*Note: Left and right side dimensions may be different due to an extension on one end of the slide.*

**B:** Enter dimension from front side of machine frame mounting bracket to front of slide or bed.

*Note: Left and right side dimensions may be different due to available mounting surfaces on side of machine.*

**C:** Enter the minimum safety distance determined by the safety distance formula. Stopping time of the machine must be determined to establish safety distance.

**D:** Enter the panel height for the guards on the left and right end of the machine.

*Note: The light curtain mounting extrusion will be a minimum of 8" longer than the light curtain field of coverage.*

**E:** Enter inside frame dimension at the rear of machine.

**F:** Enter height from floor to top of bed. Also provide maximum and minimum feedline height.

**G:** Enter dimension from back of the slide to rear of machine.

If floor/roof sections are required, please read the instructions (E & F) on the previous page and provide dimensions in the Notes section above.

### Notes:

\* 1/2" square black mesh will be furnished in the nonadjustable portion of the assembly unless otherwise specified in Notes section above.



**Precautions should be taken when applying light curtains for point-of-operation safeguarding. Be sure that someone cannot pass through or stand undetected between the plane of light and the hazard when a light curtain is mounted in a vertical position. If a light curtain must be mounted in this manner due to the safety distance requirements or because of the configuration of the machine, be sure that supplemental safeguarding is provided to safeguard this pass-through area. Examples of supplemental safeguarding include a horizontally mounted light curtain, single-beam devices, guards, or pressure-sensitive safety mats on the floor.**